



AUTO MAX ENGINEERING SOLUTION

Excellence in Engineering Design and Manufacturing

PROFILE

AUTOMAX ENGINEERING SOLUTION

ENGAGED IN THE DESIGN AND MFG OF
MACHINES, AUTOMATION PRODUCTS
,ENGG EQUIPMENTS LIKE A SPECIAL
PURPOSE MACHINES, SPECIAL PURPOSE
FIXTURE AND ASSEMBLY UNITS
UNITS,ADVANCED SIMULATION
MACHINET AND CALIBRATION UNITS
WITH CONTROLLER, SPECIAL
CUSTOMIZED TOOL AND GAUGES.



AUTO MAX ENGINEERING SOLUTION

Office: Old No 34 New No 6, Pattaravakkam, Ambattur, Chennai-600 098.

OR

AUTO MAX ENGINEERING SOLUTION IS
ENGAGED IN THE DESIGN AND
MANUFACTURING OF MACHINES,
INDUSTRIAL AUTOMATION
PRODUCTS, AND ENGINEERING
EQUIPMENT SUCH AS SPECIAL
PURPOSE MACHINES, CUSTOM
FIXTURES, ASSEMBLY UNITS,
ADVANCED SIMULATION MACHINES,
CALIBRATION UNITS WITH
CONTROLLERS, AND SPECIALIZED
CUSTOMIZED TOOLS ,Jig And Fixtures.

WE HAVE EXTENSIVE RANGE OF
PRODUCTS TO OFFER AS A SOLUTION TO
ACCESSSS DIFFERENT INDUSTRIAL NEEDS
OF OUR CLIENTS.



AUTO MAX ENGINEERING SOLUTION

Office: Old No 34 New No 6, Pattaravakkam, Ambattur, Chennai-600 098.

NAME OF THE COMPANY: AUTO MAX ENGINEERING SOLUTION,

COMPANY ADDRESS NO 16 SRINIVASA NAGAR, PERIYAR
4TH CROSS STREET ,PADI CHENNAI-
AMBATTUR INDUSTRIAL ESTATE,
CHENNAI-600 050.

GSTIN NO : 33ABLFA7034L1ZB

EMAIL ID : automaxengineering@gmail.com

CONTACT NUMBER : 91-9095162309 Mr.P.BHARATH

COMPANY ADDRESS : AUTOMAX ENGINEERING SOLUTION
A/C No. 0912073000000143
South Indian bank,
Ambattur,
IFSC CODE:SIBL0000912

OUR GOALS :

1. GATHERING INTERNATIONAL KNOWLEDGE AND EXPAND OUR ENGG MFG, QUALITY STANDARD TO ITS EXPANDABLE LIMITS.
2. PROVING OUR SELVES AS ONE OF THE BEST SUPPLIER IN GLOBAL FOR TIMELY DELIVERY AND DEFECT FREE PRODUCT THAT MEET OUR CUSTOMER REQUIREMENT.



AUTO MAX ENGINEERING SOLUTION

Office: Old No 34 New No 6, Pattaravakkam, Ambattur, Chennai-600 098.

OUR EXCELLENCE :

- DESIGN & DEVELOPMENT
- QUALITY WORKMANSHIP
- ON TIME DELIVERY
- EFFICIENT AND COST EFFECTIVE
- YOUNG MANAGEMENT TEAM.
- FLEXIBLE WITH CUSTOMER
- IDENTIFY CUSTOMER NEEDS
- IDENTIFYING OPPORTUNITIES FOR PRODUCT DEVELOPMENT

SOFTWARE USING :

AUTO CAD 2007

SOLIDWORKS

CATIA

OUR SERVICE

- : SPM MACHINES,
- ASSEMBLY FIXTURES,
- PRESS TOOLS, GAUGES,
- MACHINE FABRICATION,
- MOULD & DIES,
- INSPECTION TOOLS,
- ALUMINIUM TROLLEYS,
- NYLON COMPONENTS,
- SPM MACHINE SPARES,
- SURFACE MODELING,
- EDM SPARKING,
- EDM WIRE CUTTING,
- SURFACE TREATMENTS,
- ENGG EQUIPMENTS MFG,



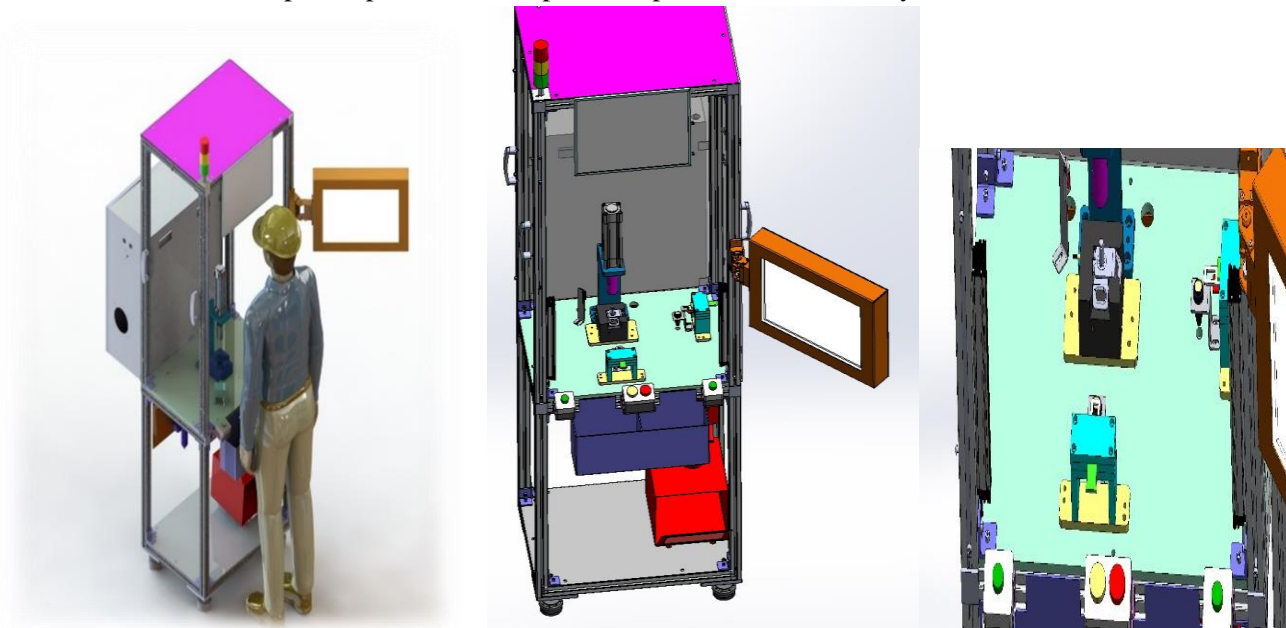
SPECIAL PURPOSE MACHINES:

❖ TWIN BUCKLE FASTENES ASSY MACHINE:-

DESCRIPTION:

Design and manufacturing Fastener Assembly Machine by using fastener components.

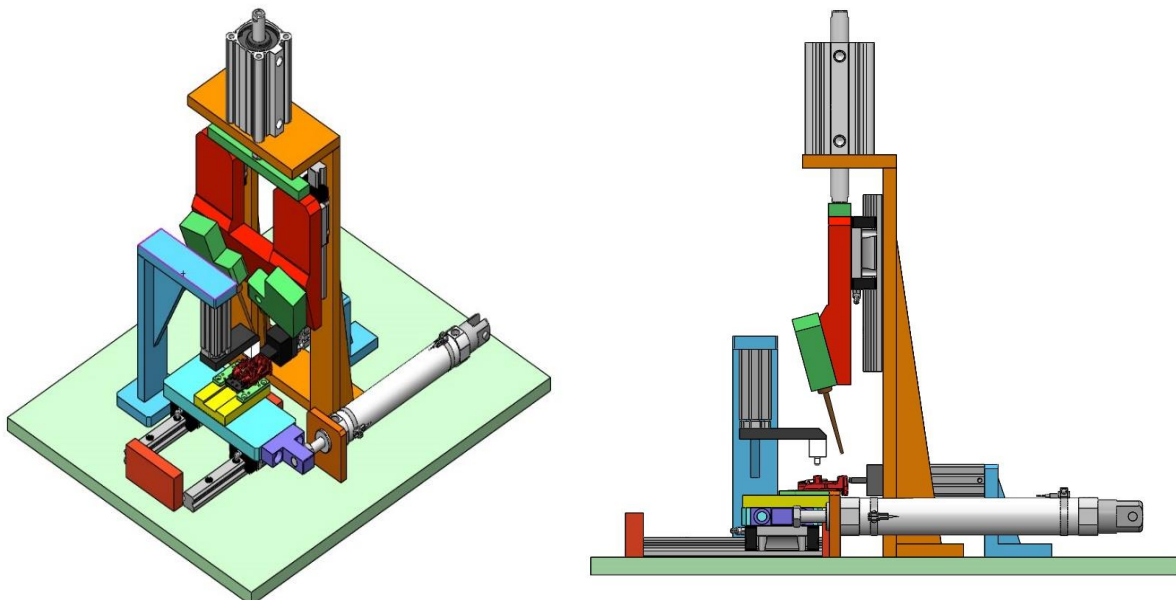
Mechanical setup with pneumatic setup will be provided for assembly station for the control of PLC.



❖ GREASE APPLYING MACHINE IN BUCKLE:-

DESCRIPTION:

Design, manufacturing and commissioning of buckle latch guide separation by applying grease in a component. Mechanical setup with pneumatic setup with provided for assembly station in which control of PLC with HMI and pressure sensor for preventing grease flow.





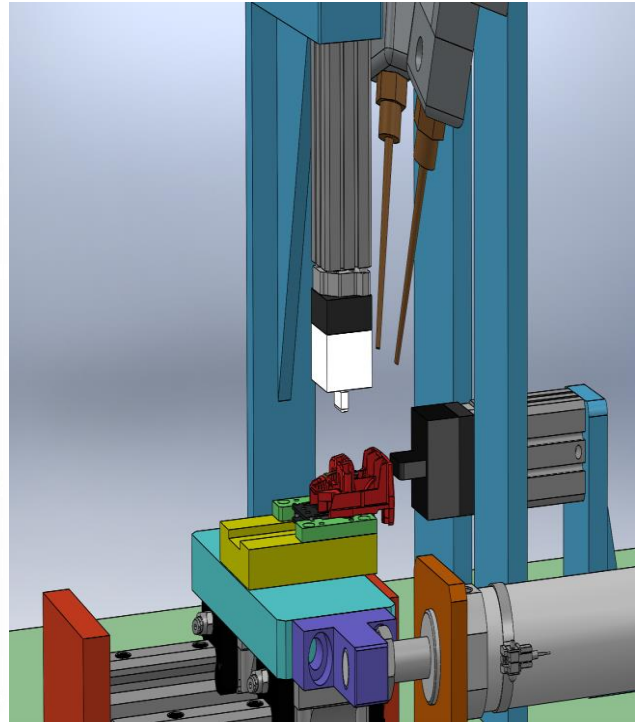
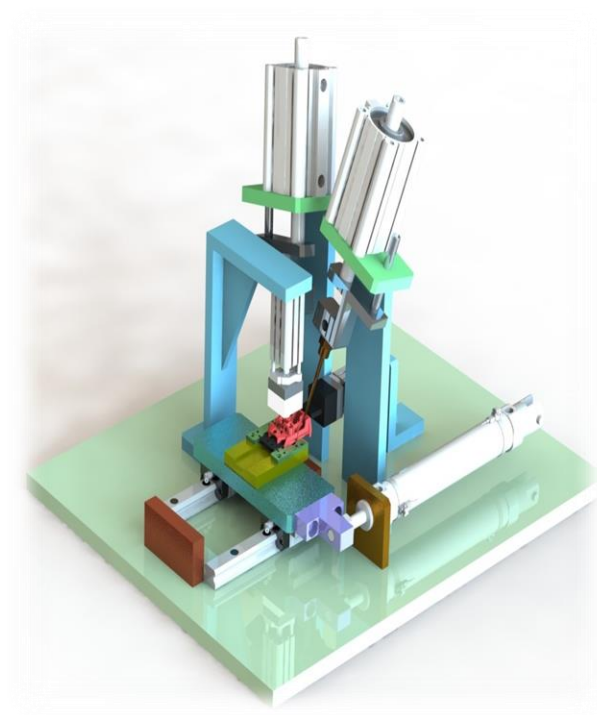
AUTO MAX ENGINEERING SOLUTION

Office: Old No 34 New No 6, Pattaravakkam, Ambattur, Chennai-600 098.

❖ GREASE MODIFICATION WITH DOBAG INTEGRATION ASSY:-

DESCRIPTION:

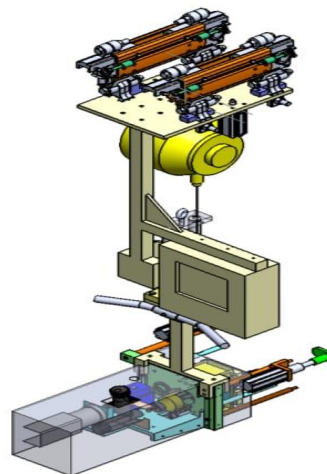
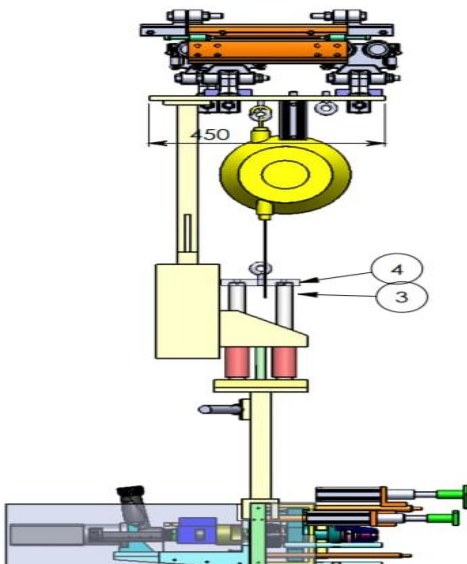
Modifying grease applying machine for Buckle latch guide assembly by applying grease with the help of mechanical and pneumatic setup by replacing new **DOBAG** integration using Pressure sensor for controlling the grease flow.



❖ O/P CAM SETTING ELECTRICAL AND MOUNTING ACCESSORIES MACHINE:-

DESCRIPTION:

Manufacturing and commissioning of OPSCS suspension using suspension torque nut tightening Mechanical setup with pneumatic setup with provided for assembly station in which control of PLC.



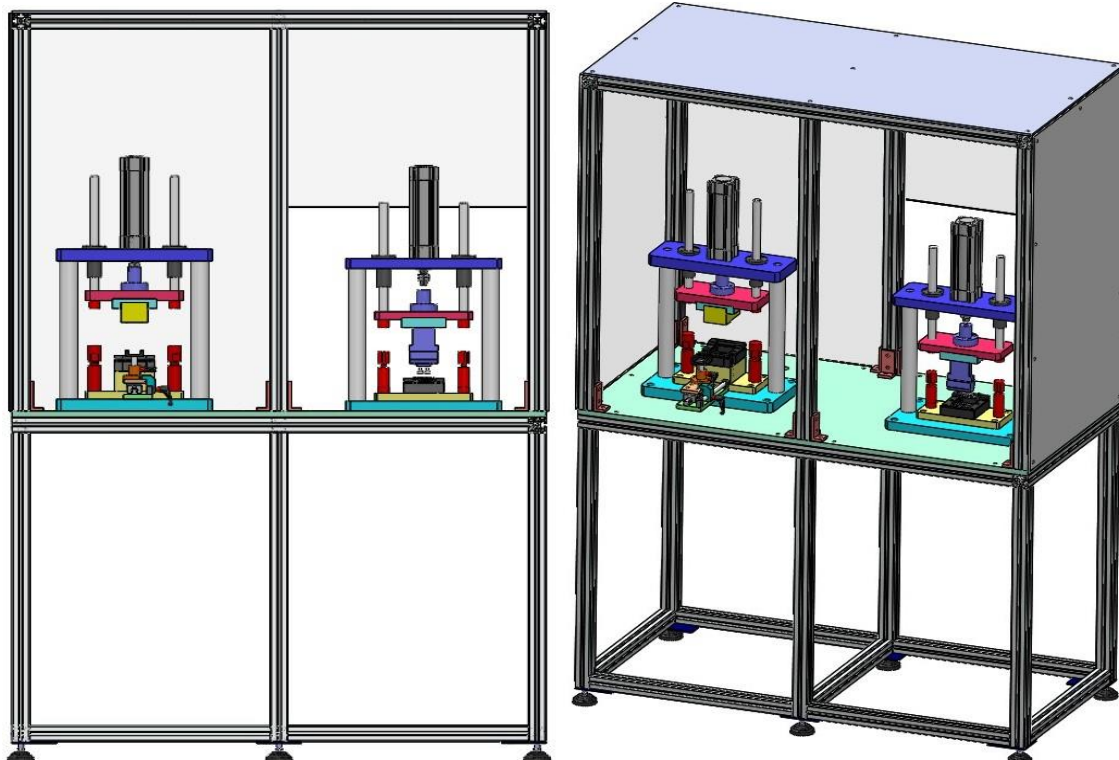


❖ BUCKLE DOUBLE PINPRESS MACHINE:-

DESCRIPTION:

Design and manufacturing Buckle Double Pin Press Machine Cover Assy components.

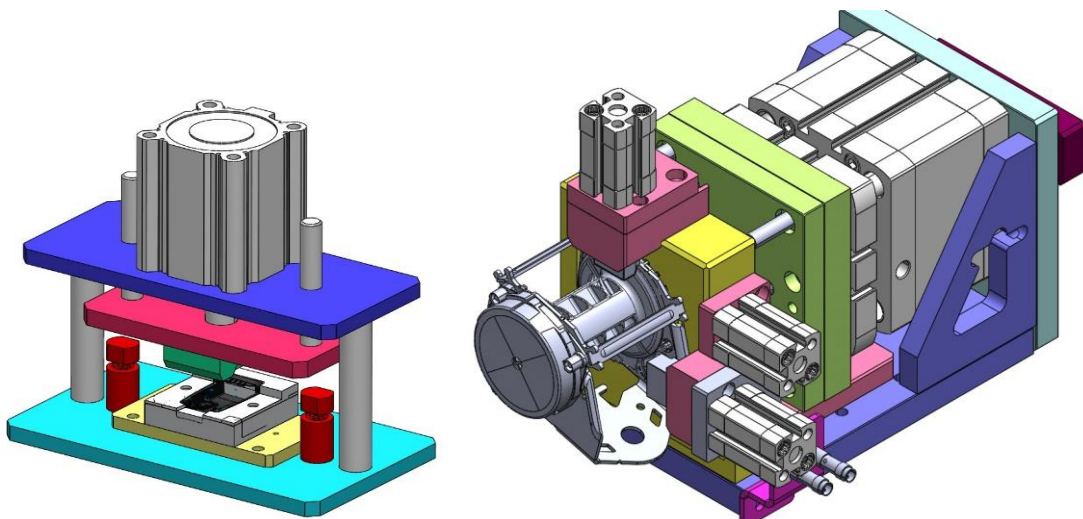
Mechanical setup with pneumatic setup will be provided for assembly station for the control of PLC.



❖ DOUBLE PIN PRESS AND BUCKLE COVER PRESSING MACHINE ASSY:-

DESCRIPTION:

Design and manufacturing of buckle cover pressing assembly setup with manual height adjustable.

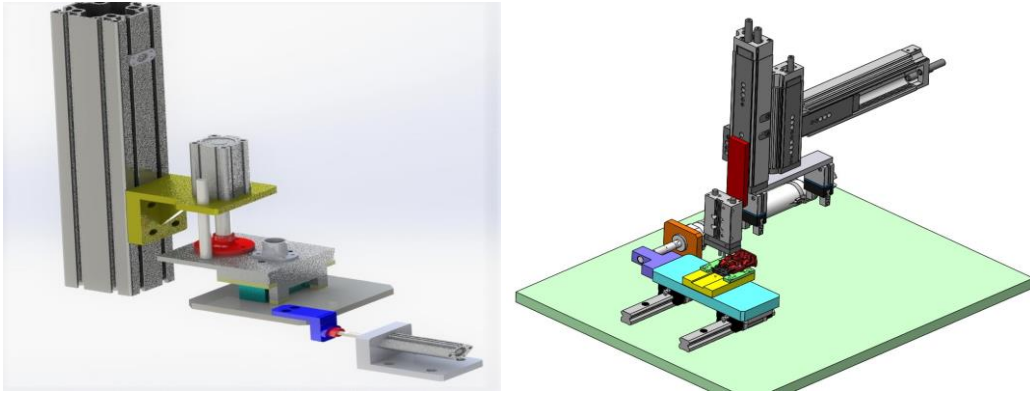




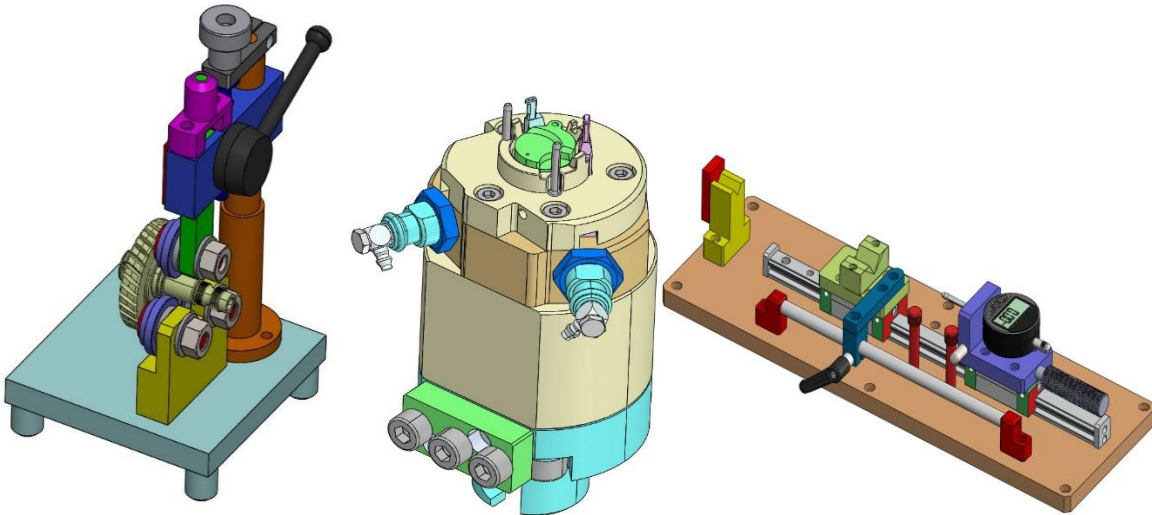
AUTO MAX ENGINEERING SOLUTION

Office: Old No 34 New No 6, Pattaravakkam, Ambattur, Chennai-600 098.

❖ GA-MGH 100 Vacuum Cleaner Setup:-

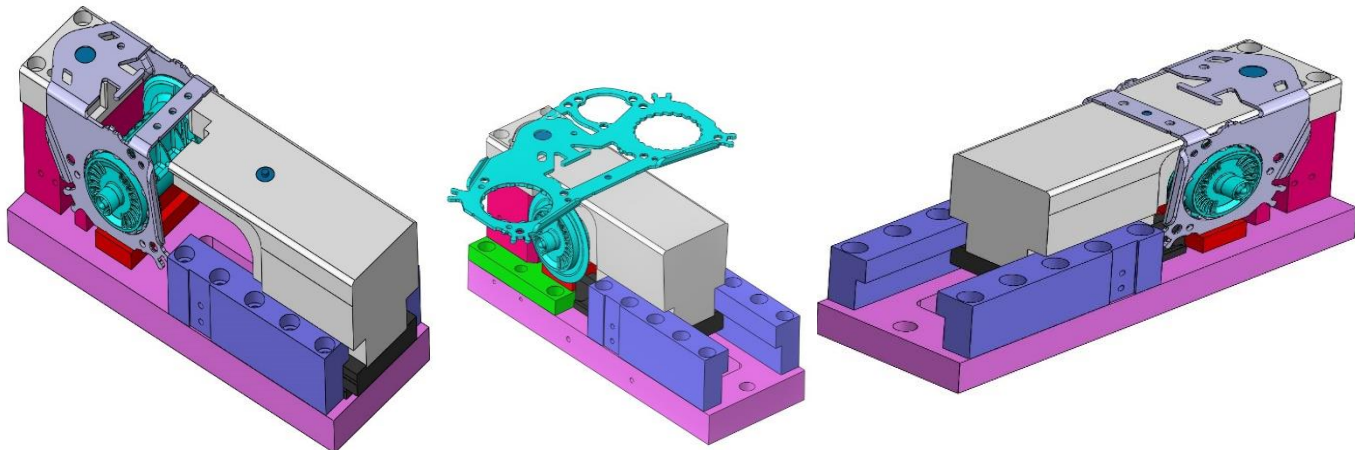


❖ Checking Inspection Assembly Fixture:-



DIE And PRESS TOOL FIXTURES:

❖ BASE BENDING FIXTURE ASSY:-

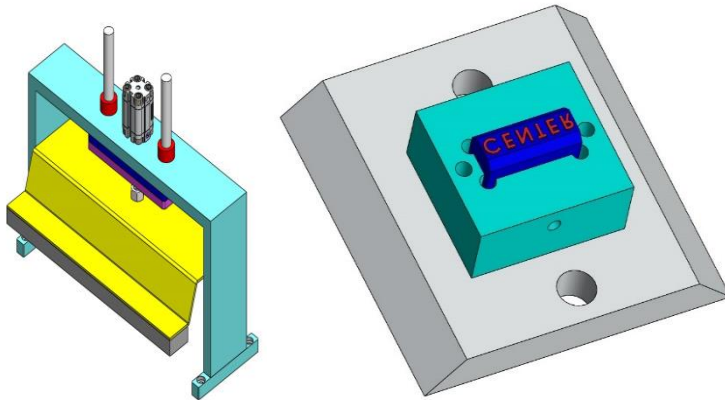




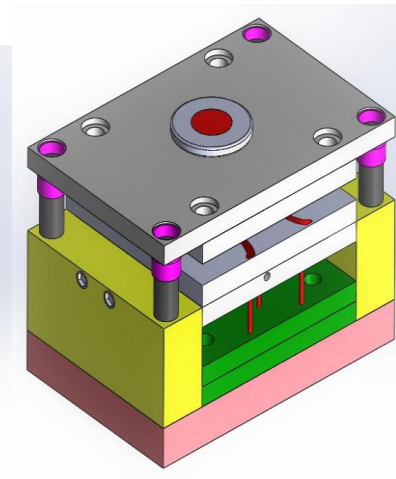
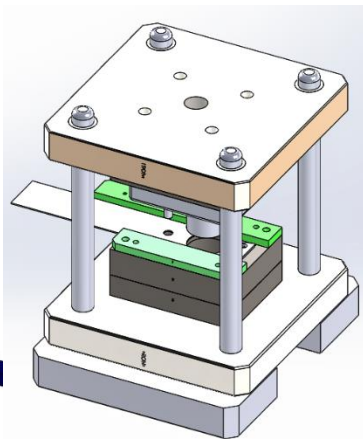
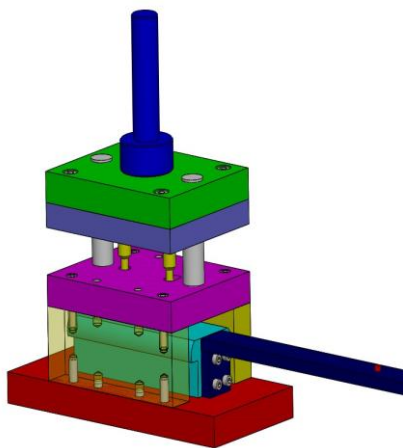
AUTO MAX ENGINEERING SOLUTION

Office: Old No 34 New No 6, Pattaravakkam, Ambattur, Chennai-600 098.

❖ Pneumatic Heat Stamping Pressing Machine:-

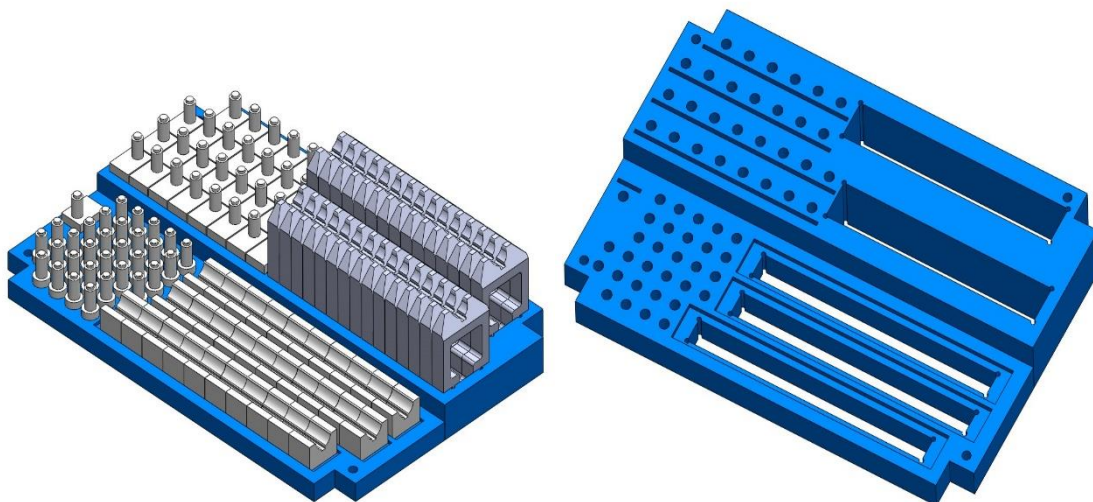


❖ Mould and Punch Dies:-



NYLON PARTS:-

❖ Nylon locator



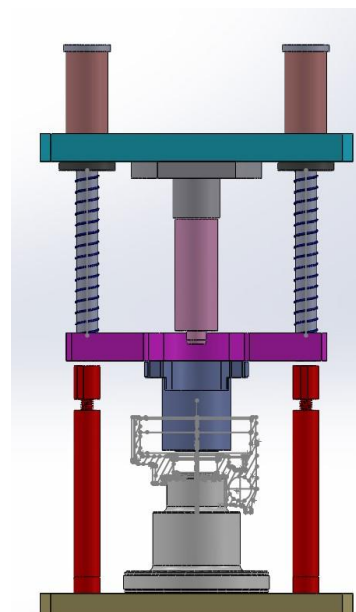
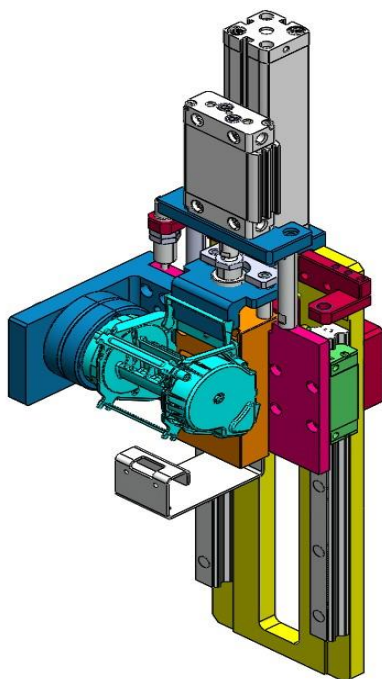
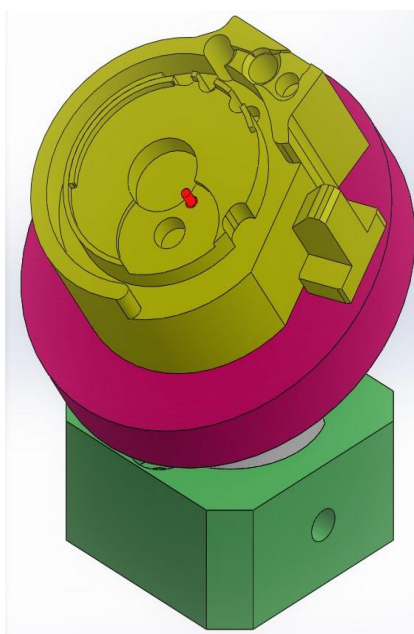
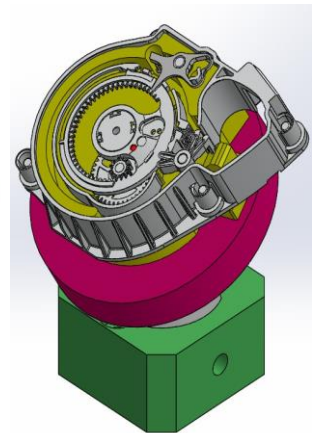
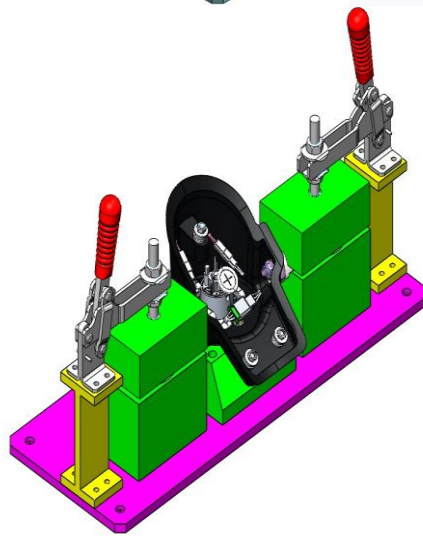
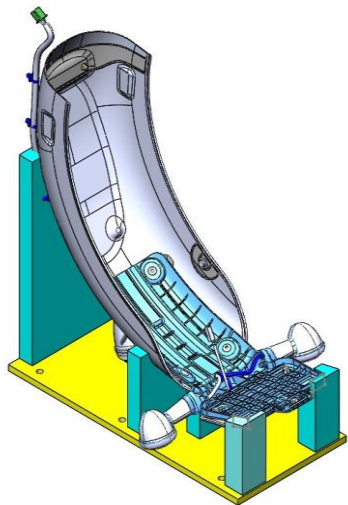
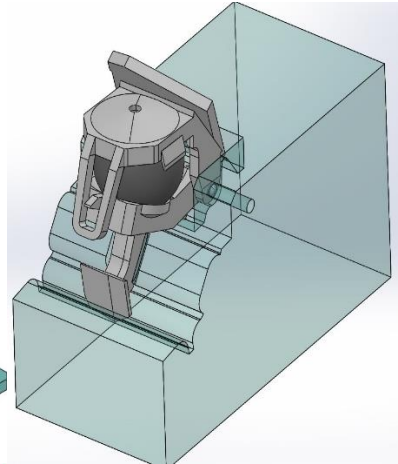
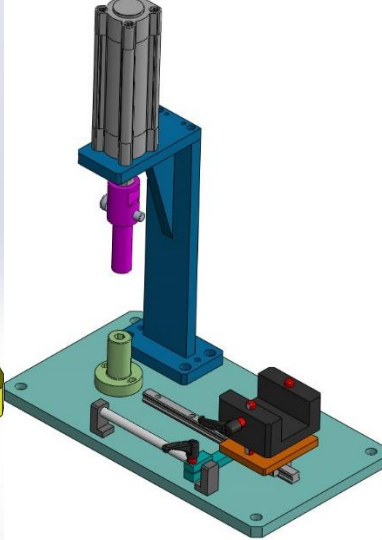
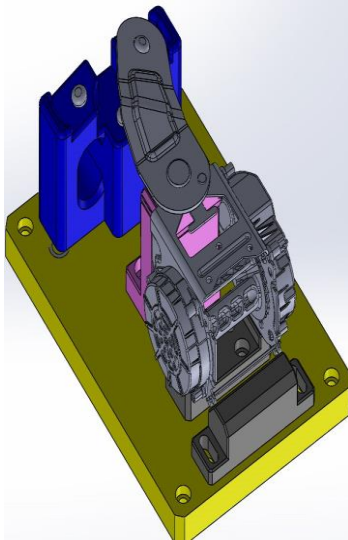


AUTO MAX ENGINEERING SOLUTION

Office: Old No 34 New No 6, Pattaravakkam, Ambattur, Chennai-600 098.

ASSEMBLY FIXTURE AND JIGS:-

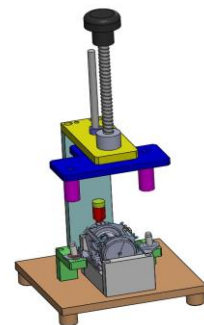
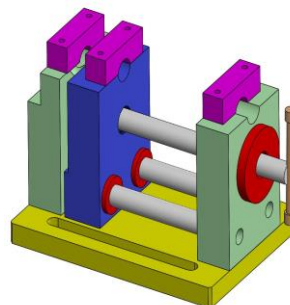
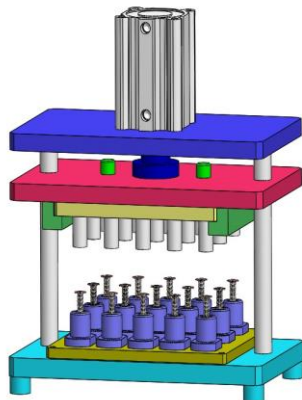
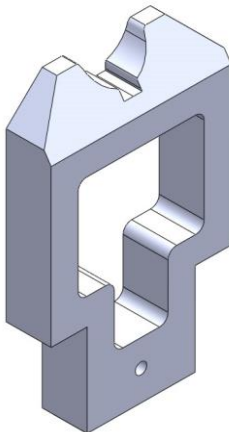
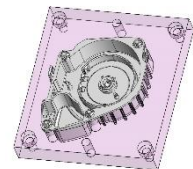
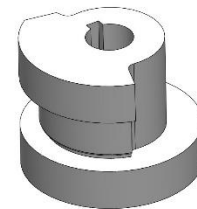
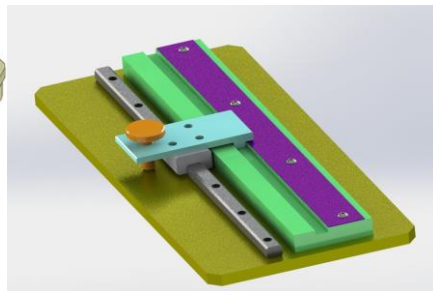
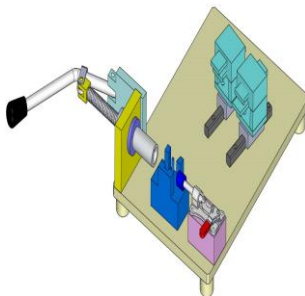
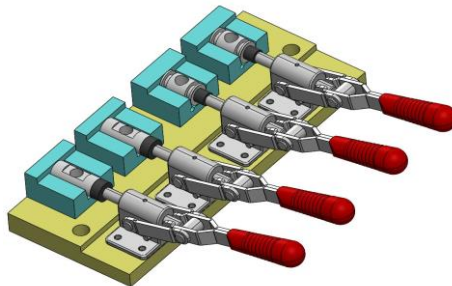
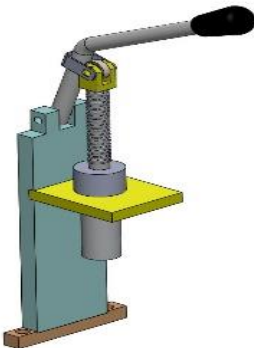
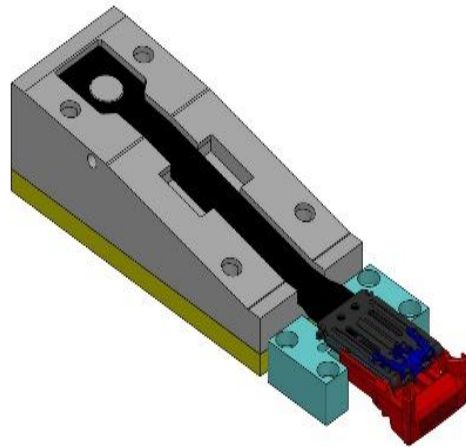
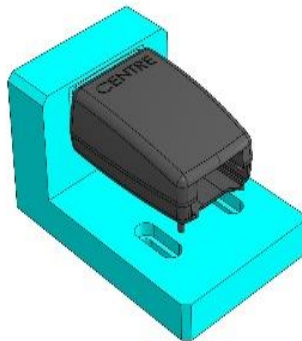
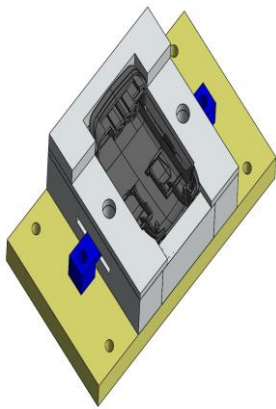
❖ LOCATOR ASSY FIXTURE





AUTO MAX ENGINEERING SOLUTION

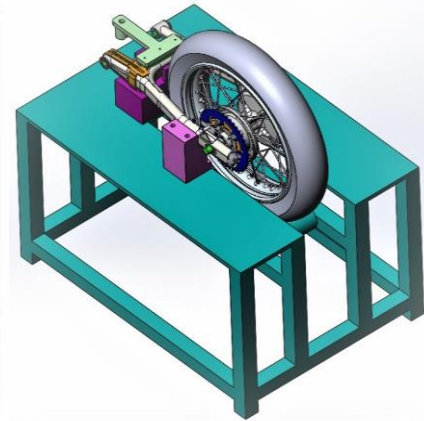
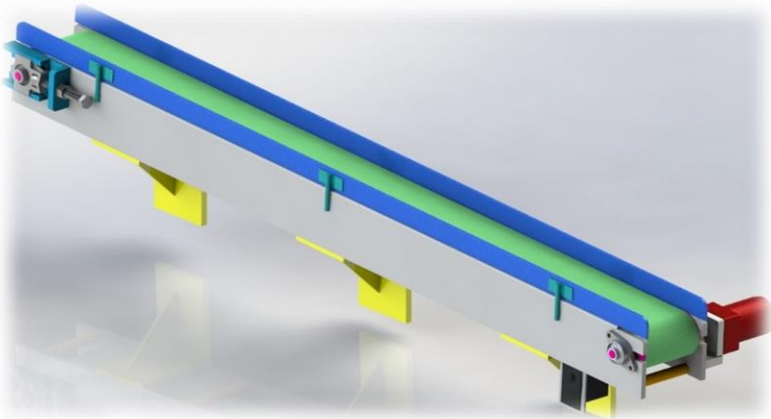
Office: Old No 34 New No 6, Pattaravakkam, Ambattur, Chennai-600 098.



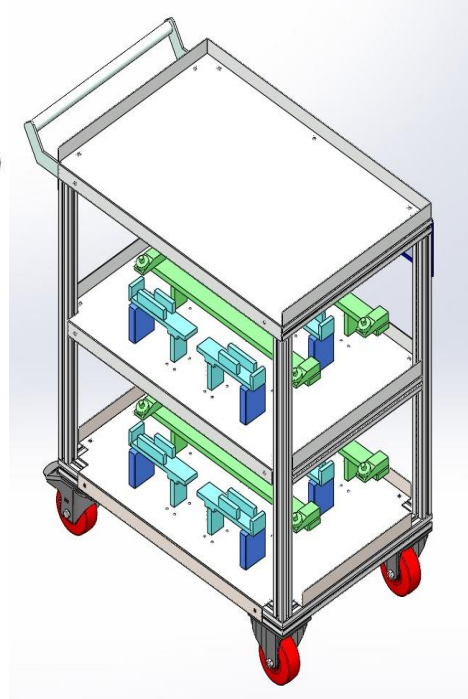
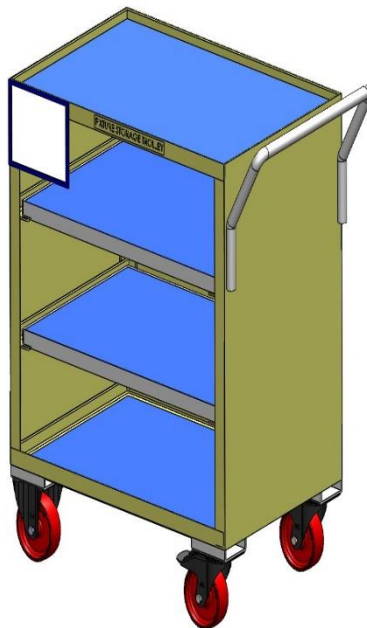
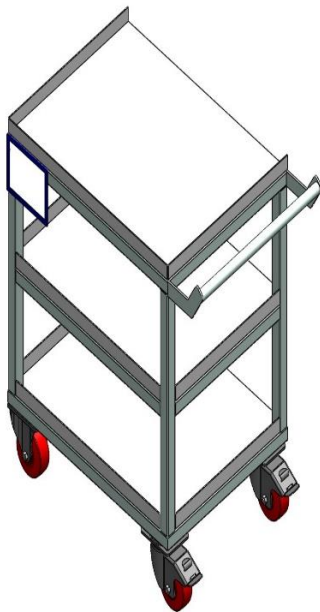


FABRICATION ITEMS:-

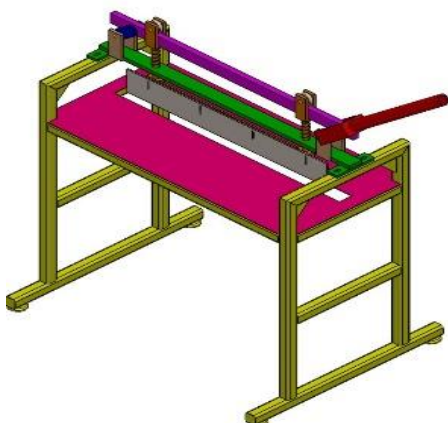
❖ Belt conveyor, Assy Fixtures



❖ Fixture Storage Trolleys



❖ CUTTING TABLE





AUTO MAX ENGINEERING SOLUTION

Office: Old No 34 New No 6, Pattaravakkam, Ambattur, Chennai-600 098.

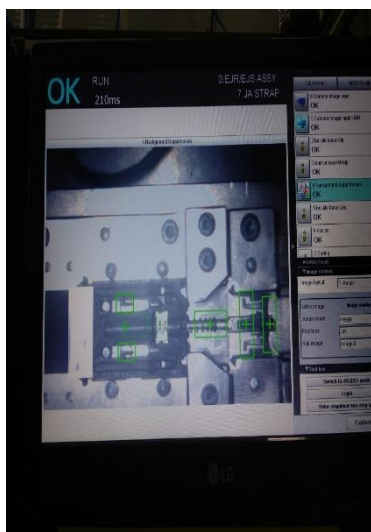
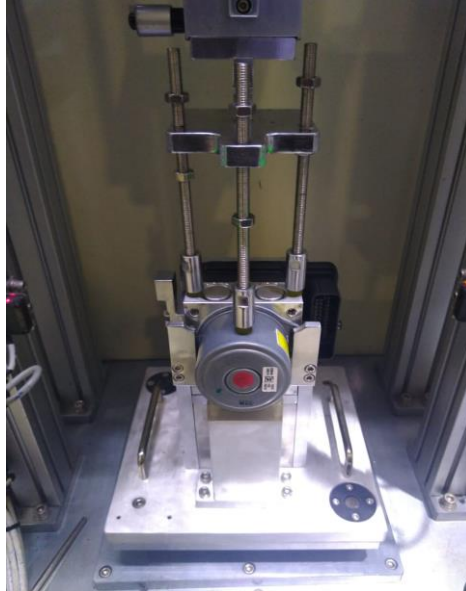
OUR SERVICE PRODUCTS FEW IMAGES :-





AUTO MAX ENGINEERING SOLUTION
Office: Old No 34 New No 6, Pattaravakkam, Ambattur, Chennai-600 098.

OUR SERVICE PRODUCTS FEW IMAGES:-

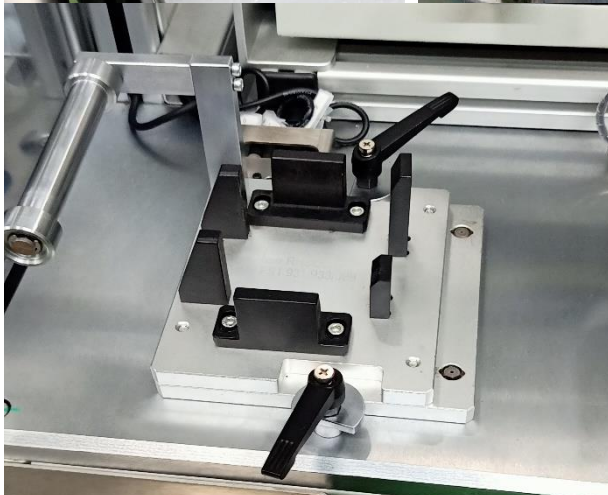
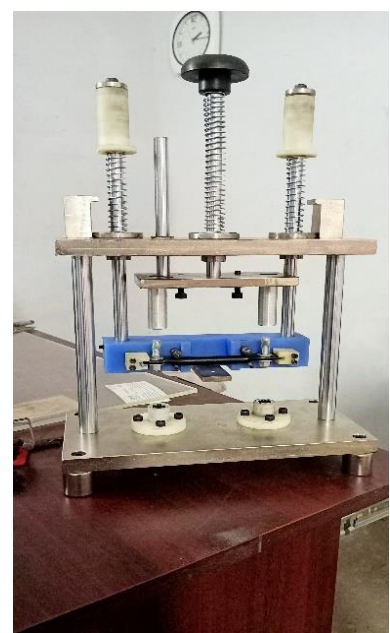
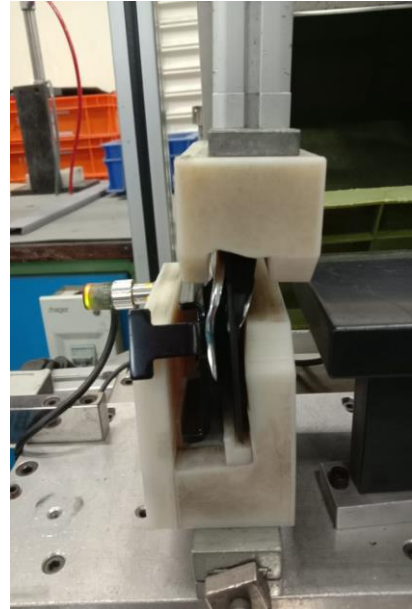
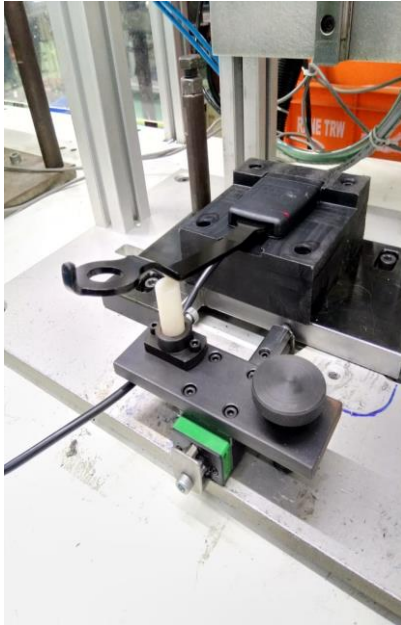




AUTO MAX ENGINEERING SOLUTION

Office: Old No 34 New No 6, Pattaravakkam, Ambattur, Chennai-600 098.

OUR SERVICE PRODUCTS FEW IMAGES:-





AUTO MAX ENGINEERING SOLUTION

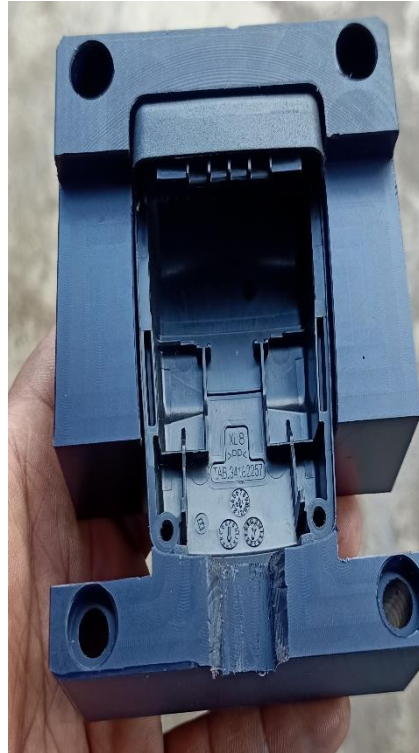
Office: Old No 34 New No 6, Pattaravakkam, Ambattur, Chennai-600 098.





AUTO MAX ENGINEERING SOLUTION

Office: Old No 34 New No 6, Pattaravakkam, Ambattur, Chennai-600 098.





AUTO MAX ENGINEERING SOLUTION

Office: Old No 34 New No 6, Pattaravakkam, Ambattur, Chennai-600 098.

OUR MACHINE DETAILS:-



VMC MACHINE -2 nos

4.5 FEET CONVENTIONAL LATHE

MILLING DRO 3M

DRILL AND TAP

OUR PLAN (2024-25) : VMC MACHINE-3 NOV 2024





AUTO MAX ENGINEERING SOLUTION

Office: Old No 34 New No 6, Pattaravakkam, Ambattur, Chennai-600 098.

OUR VALUABLE CUSTOMERS:



MANDO AUTOMOTIVE INDIA PVT LTD



RSB TRANSMISSION (I) PVT LTD.



MAGNA AUTOMOTIVE INDIA PVT LTD.



RANE TRW STEERING SYSTEMS LIMITED.



YOUNGSHIN INDIA PVT LTD.

KRR HEAVY ENGINEERING PVT LTD.



360° GLOBAL EQUIPMENTS PVT LTD.



CHENNAI FORGE PRODUCTS PVT LTD.



FAIR PACK MACHINERIES PVT LTD.



CMD PRECISION PRODUCTS PVT LTD.



RANE TRW STEERING SYSTEMS LIMITED.
Occupant Safety Products, Trichy.



WTG-DESIGN & MFG WORKS.

ARF ENGINEERING PVT LTD.

THANK YOU..!